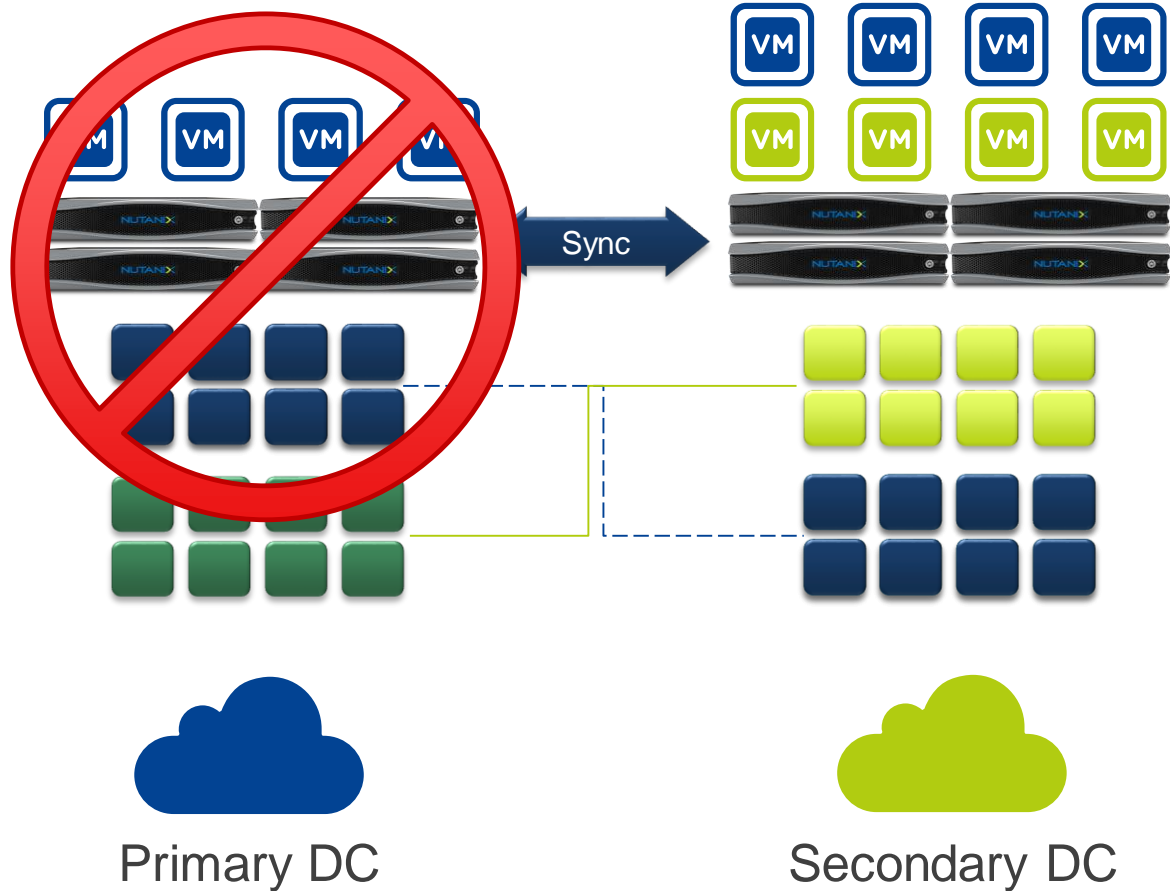


A large, light gray arrow with a green outline points from the left edge of the slide towards the text.

> Making IT Infrastructure Invisible

> Metro Availability and Sync Replication

RPO: 0
RTO: minutes



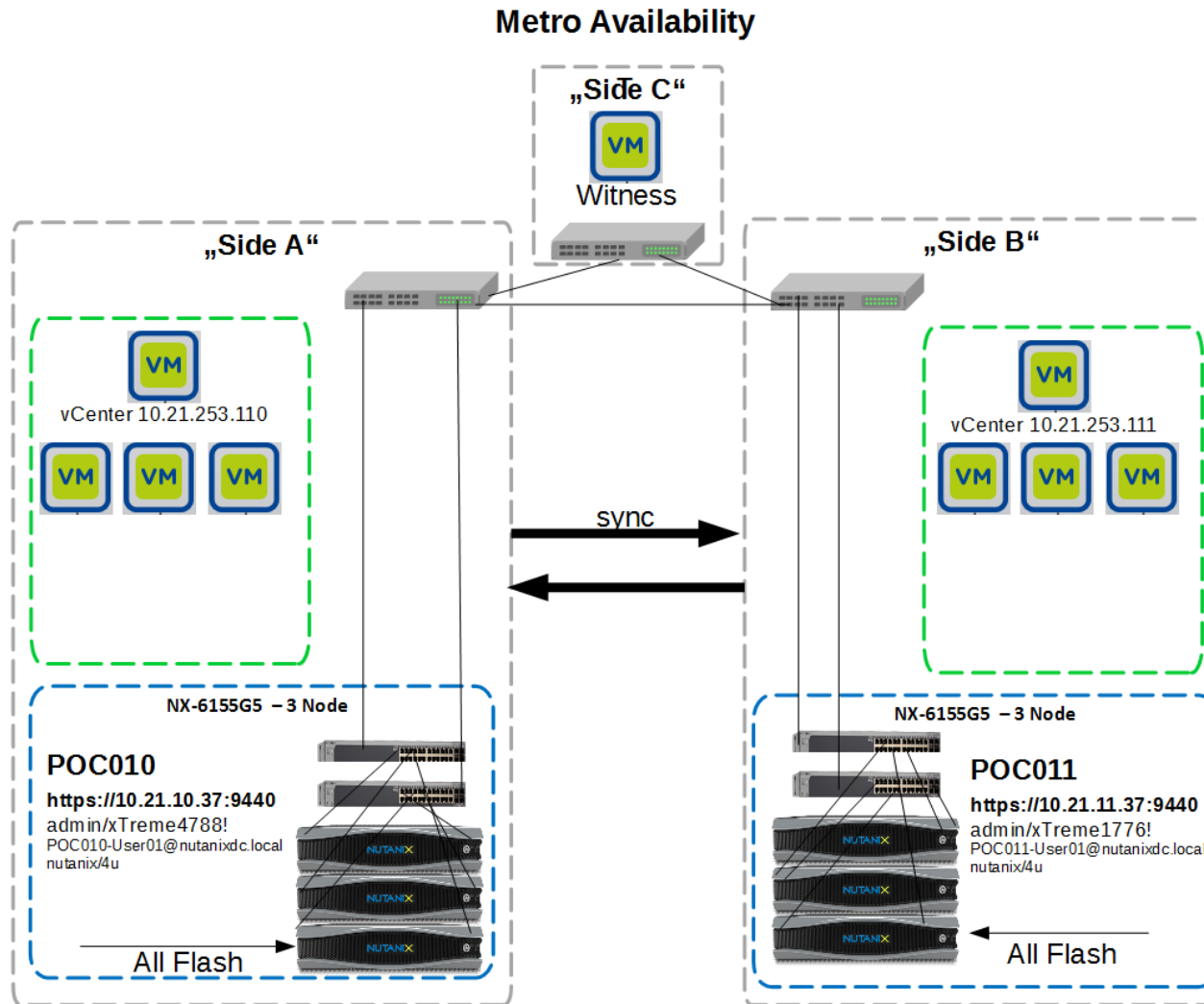
Use Cases

- Protection against complete site failure(s)
- No data loss in case of a site failure

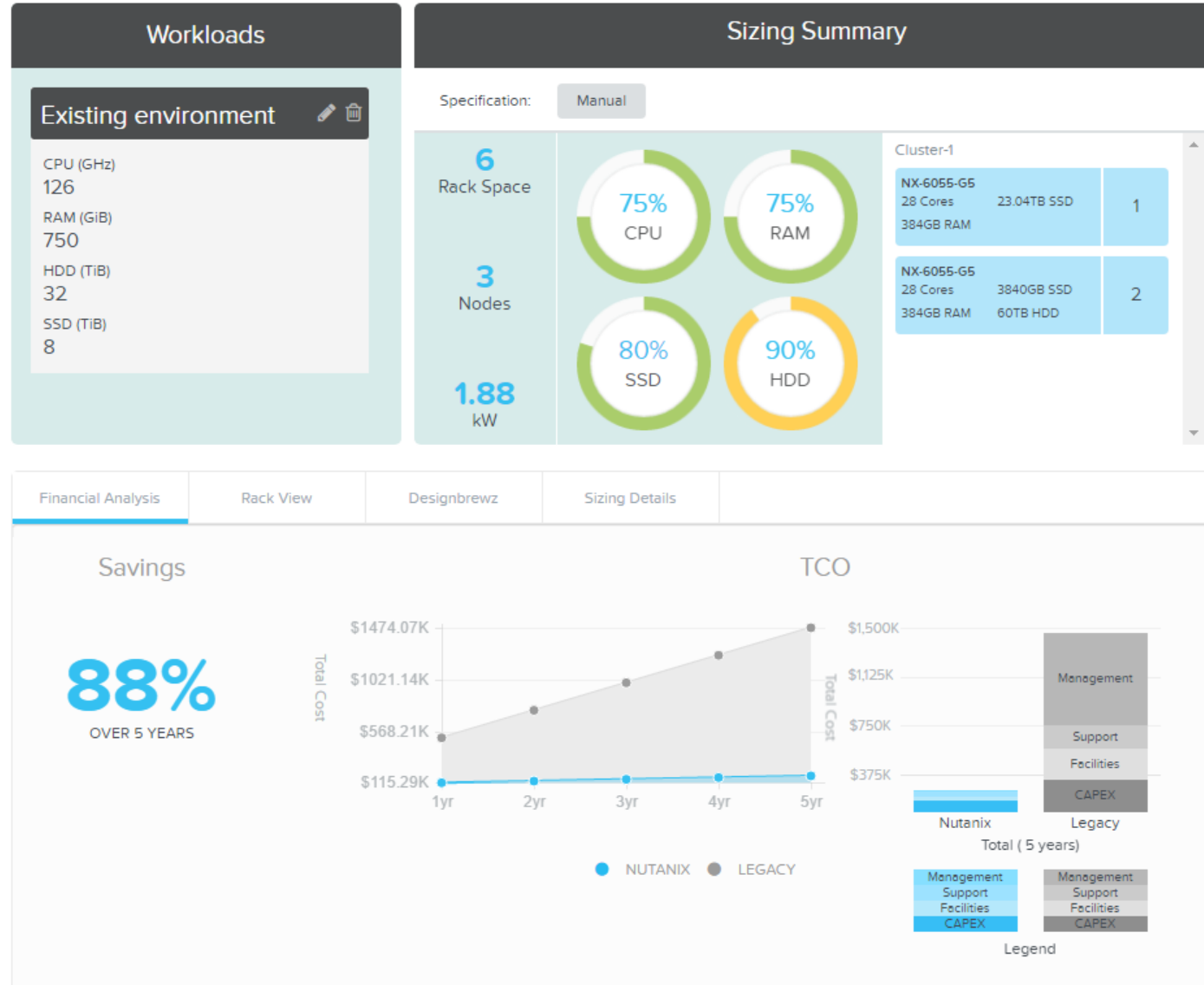
Points of differentiation

- Easy to setup and manage
- Interop with a-sync replication (3rd site)
- Rest API driven (customer DR runbooks)

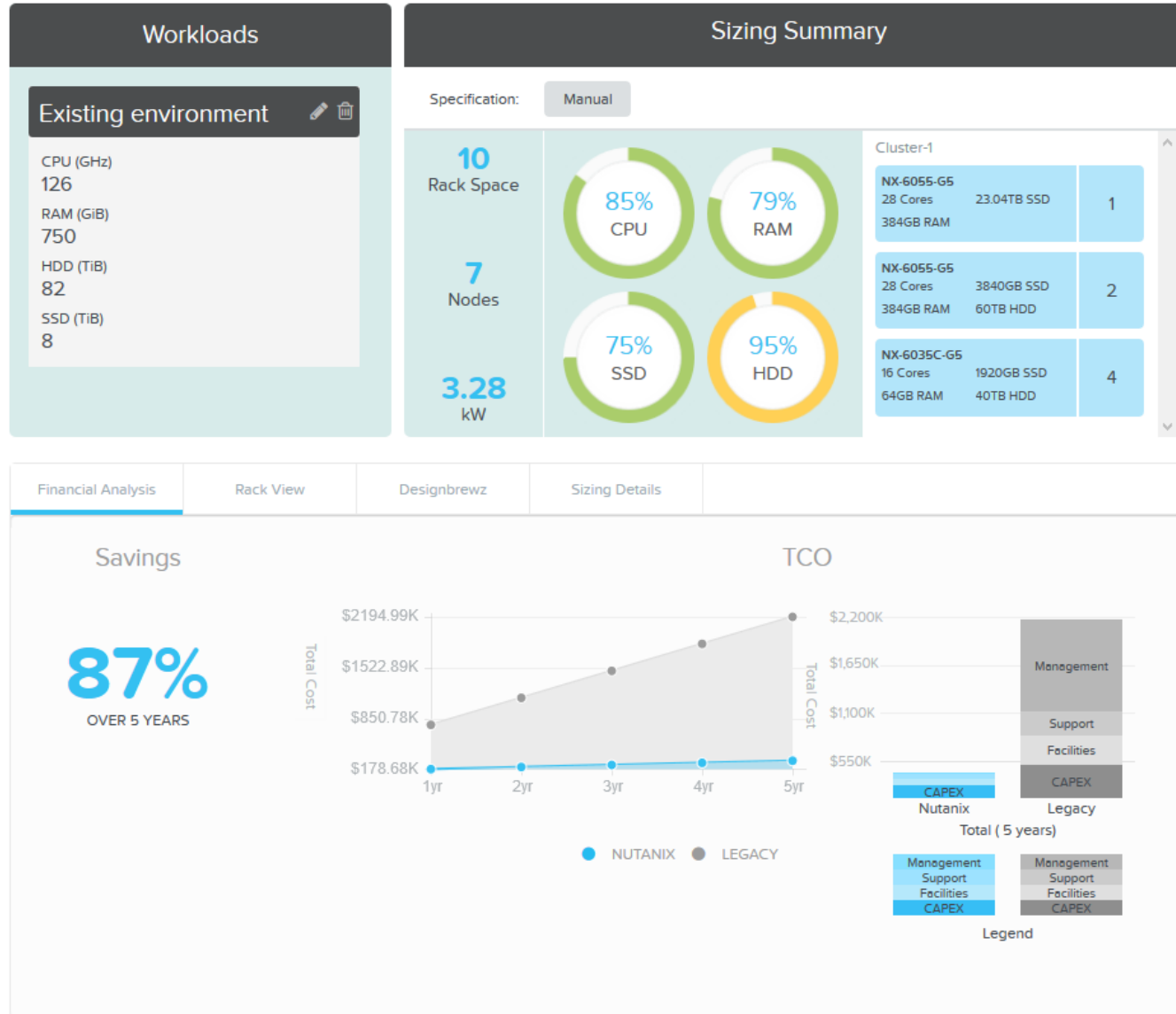
> Design Lösung



> Sizing für aktuellen Workload



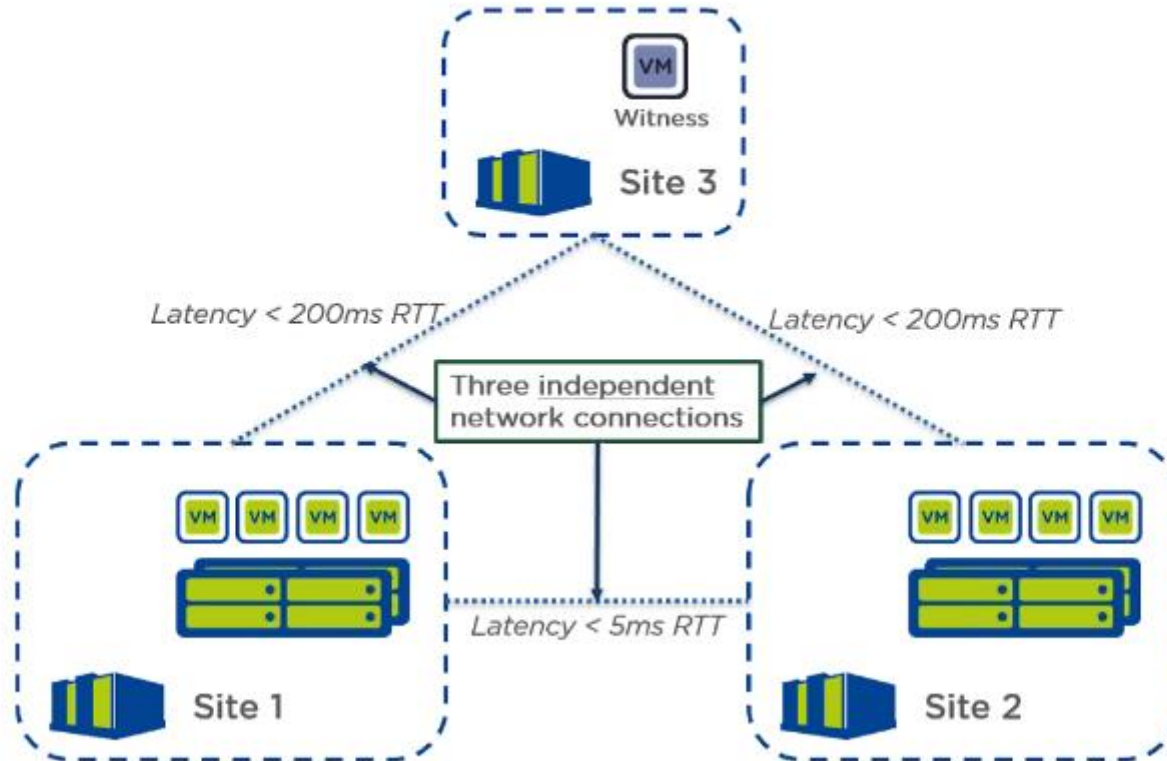
> Sizing Endausbau (Vielleicht)



> Witness Network

Figure: Witness Network Connections

[Click to enlarge](#)



> Witness Failure Handling

Protection Domain (Metro Availability) ? X

Name · Storage Containers · Remote Sites · **Failure Handling** · Schedule · Review

Select failure handling mode:

- Witness**
The Nutanix Witness will automatically decide whether to failover in case of site or network outage
- Automatic Resume**
Virtual Machines in a protected container will automatically resume operation after the specified timeout. Requires manual intervention in case of primary site outage
- Manual**
All resume or failover operations are manually driven by Nutanix administrator

Previous Cancel Next

> Witness – What happens when?

Failure Scenario	Witness Mode	Automatic Resume Mode	Manual Mode
Site 1 outage or complete network failure in Site 1	Automatically fails over to Site 2	Metro Availability stops. Administrator must manually activate protection domain on Site 2 and restart VMs.	Metro Availability stops. Administrator must manually activate protection domain on Site 2 and restart VMs.
Site 2 outage or complete network failure in Site 2	VMs continue to run on Site 1	VMs continue to run on Site 1	All VMs are paused. Administrator intervention required.
Connection loss between Sites 1 and 2	VMs continue to run on Site 1	VMs continue to run after timeout	All VMs are paused. Administrator intervention required.
Witness failure	No impact. However, ability to recover automatically in some scenarios is lost.	n/a	n/a
Connection loss between Witness and Site 1	VMs continue to run on Site 1	n/a	n/a
Connection loss between	VMs continue to run on Site 1	n/a	n/a